



Meridian Solar Farm

EN010169

Volume 6

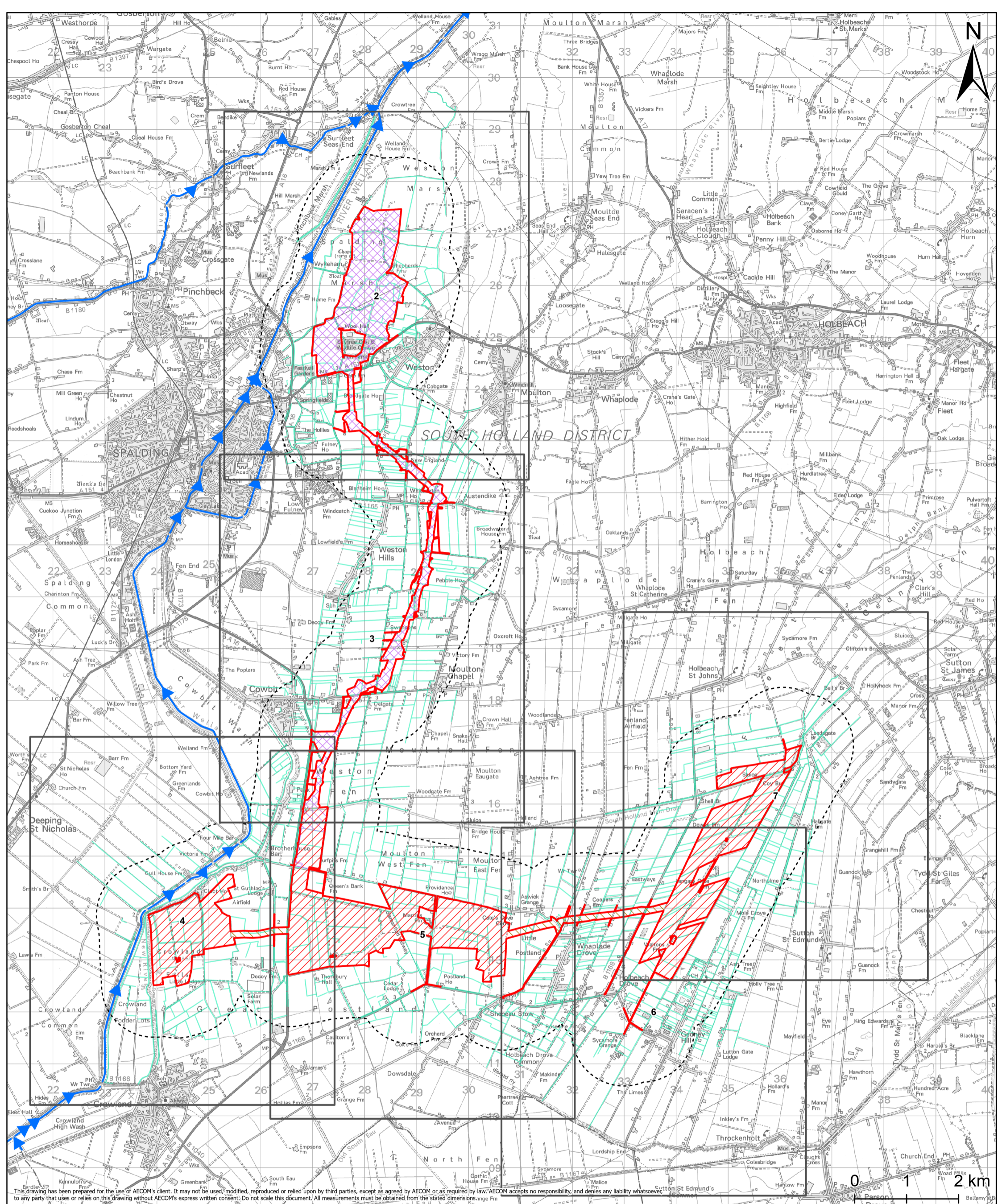
Environmental Statement

6.2 ES Figure 11-4: Surface
Water Flood Risk

APFP Regulation 5(2)(a)

Infrastructure Planning (Applications:
Prescribed Forms and Procedure)
Regulations 2009

March 2026



This drawing has been prepared for the use of AECOM's client. It may not be used, modified, reproduced or relied upon by third parties, except as agreed by AECOM or as required by law. AECOM accepts no responsibility, and denies any liability whatsoever, to any party that uses or relies on this drawing without AECOM's express written consent. Do not scale this document. All measurements must be obtained from the stated dimensions.

Project Title Meridian Solar Farm			
Map Title Environmental Statement Figure 11-4: Surface Water Flood Risk Sheet 1 of 7			
Scale 1:65,000	Version 0	Drawn LL	Reviewed AK

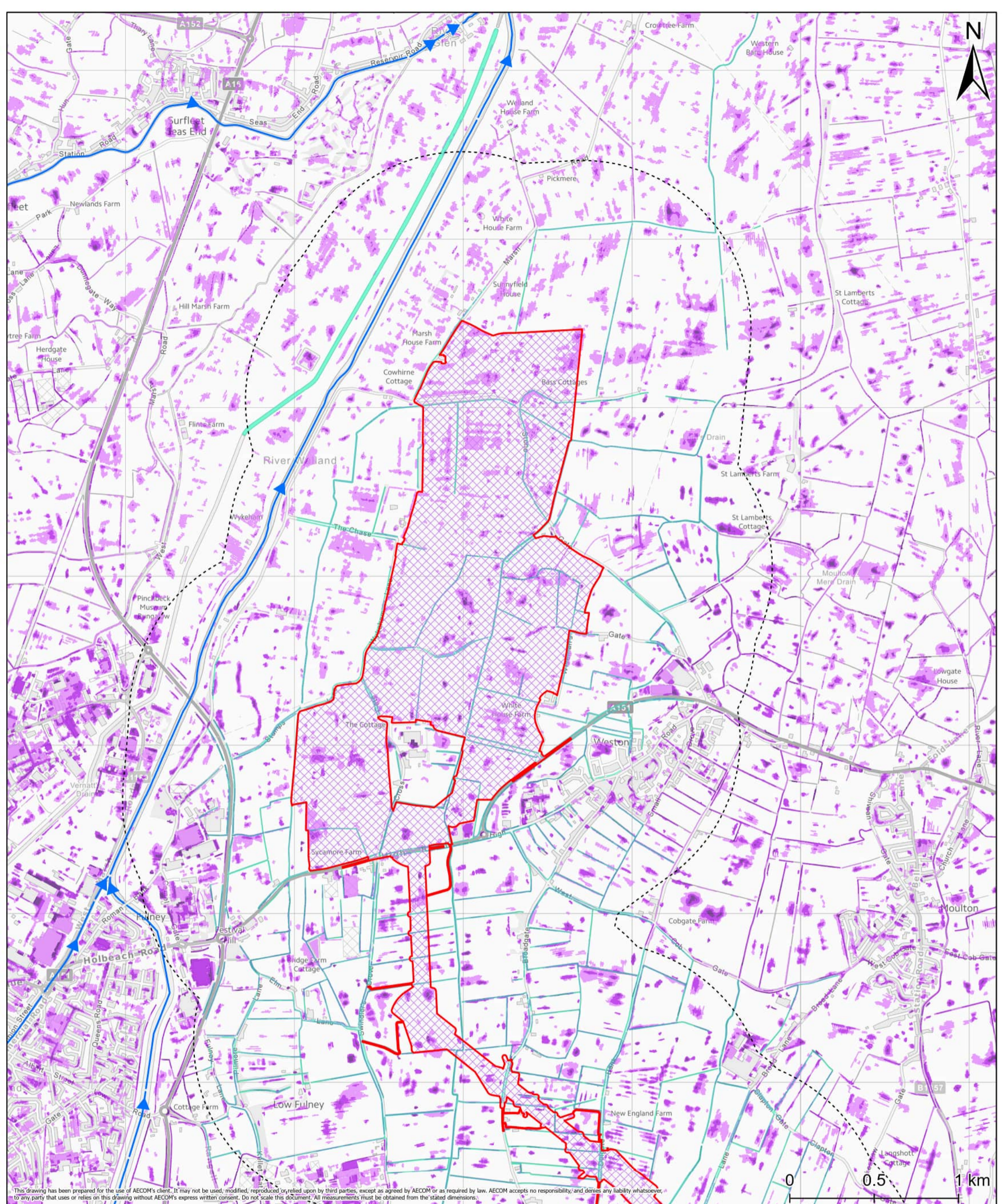
Order Limits
Order Limits - 1km Buffer
Grid Connection Route
Inter-Array Connections
Solar Development Areas
Designated Main River
Ordinary Watercourse

Date: 20/03/2026

Copyright
 Contains OS data © Crown Copyright and database right 2025. Contains data from OS Zoomstack. Reproduced from Ordnance Survey digital map data © Crown copyright 2025. All rights reserved. Licence number AC000808122.
 © Environment Agency copyright and/or database right 2025. All rights reserved. Contains OS data © Crown copyright and database right 2025.

Note: Surface Water Flood Risk Extent - Very Low is all other areas unshaded





This drawing has been prepared for the use of AECOM's client. It may not be used, modified, reproduced or relied upon by third parties, except as agreed by AECOM or as required by law. AECOM accepts no responsibility, and denies any liability whatsoever, to any party that uses or relies on this drawing without AECOM's express written consent. Do not scale this document. All measurements must be obtained from the stated dimensions.



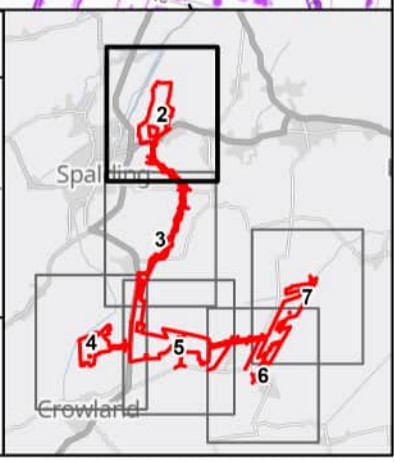
Project Title			
Meridian Solar Farm			
Map Title			
Environmental Statement Figure 11-4: Surface Water Flood Risk Sheet 2 of 7			
Scale	Version	Drawn	Reviewed
1:20,000	0	LL	AK

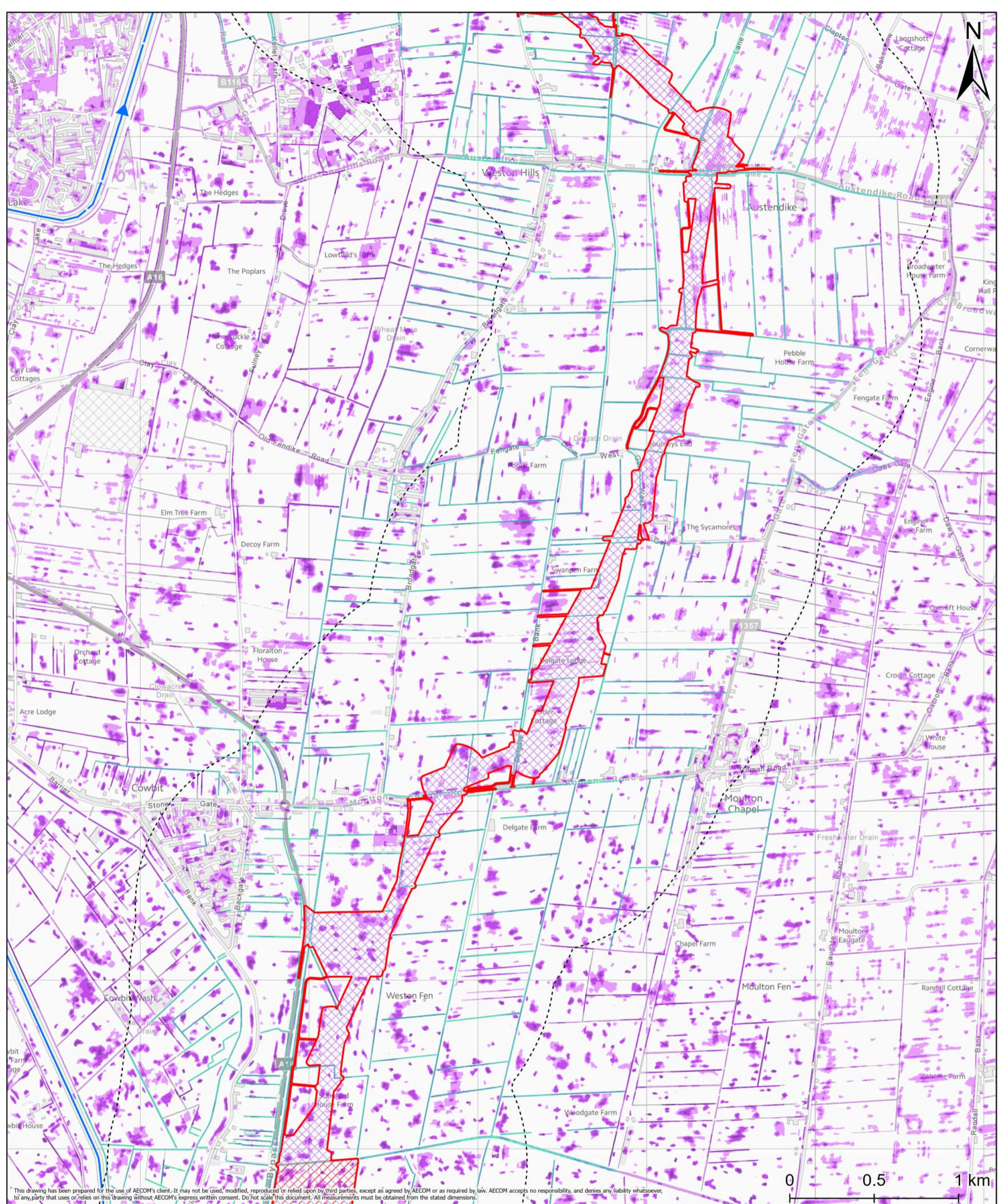
Order Limits	
Order Limits - 1km Buffer	
Grid Connection Route	
Designated Main River	
Ordinary Watercourse	
Surface Water Flood Risk Extent	
High - 3.3% Annual Exceedance Probability	
Medium - 1% Annual Exceedance Probability	
Low - 0.1% Annual Exceedance Probability	

Date: 20/03/2026

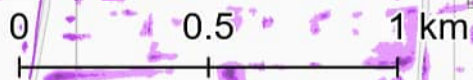
Copyright
 Contains OS data © Crown Copyright and database right 2025. Contains data from OS Zoomstack, Contains OS data © Crown copyright 2025. Reproduced from Ordnance Survey digital map data © Crown copyright 2025. All rights reserved. Licence number AC0000808122.
 © Environment Agency copyright and/or database right 2025. All rights reserved. Contains OS data © Crown copyright and database right 2025.

Note: Surface Water Flood Risk Extent - Very Low is all other areas unshaded





This drawing has been prepared for the use of AECOM's client. It may not be used, modified, reproduced or relied upon by third parties, except as agreed by AECOM or as required by law. AECOM accepts no responsibility, and denies any liability whatsoever, to any party that uses or relies on this drawing without AECOM's express written consent. Do not scale this document. All measurements must be obtained from the stated dimensions.



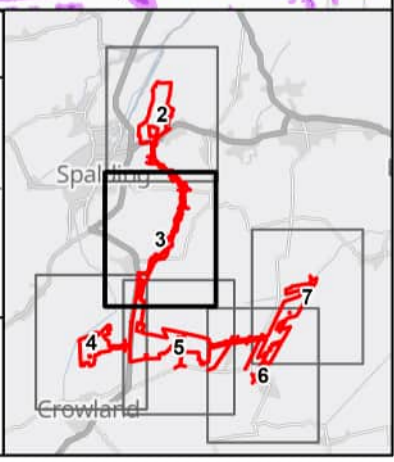
Project Title Meridian Solar Farm			
Map Title Environmental Statement Figure 11-4: Surface Water Flood Risk Sheet 3 of 7			
Scale 1:20,000	Version 0	Drawn LL	Reviewed AK

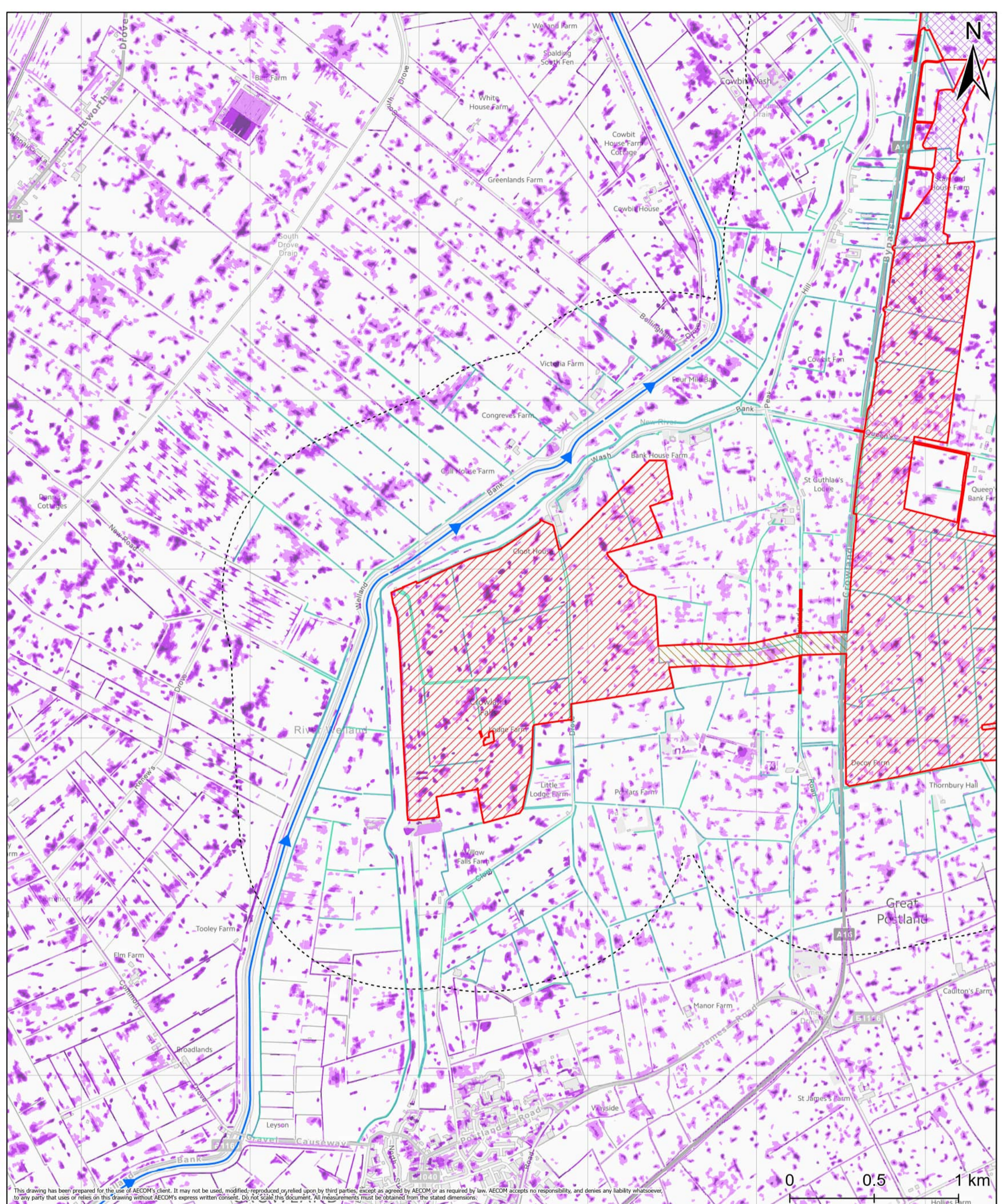
Legend	<ul style="list-style-type: none"> Order Limits Order Limits - 1km Buffer Grid Connection Route Solar Development Areas ➔ Designated Main River 	<ul style="list-style-type: none"> Ordinary Watercourse <p>Surface Water Flood Risk Extent</p> <ul style="list-style-type: none"> High - 3.3% Annual Exceedance Probability Medium - 1% Annual Exceedance Probability Low - 0.1% Annual Exceedance Probability
---------------	--	---

Date: 20/03/2026

Copyright
 Contains OS data © Crown Copyright and database right 2025. Contains data from OS Zoomstack, Contains OS data © Crown copyright 2025. Reproduced from Ordnance Survey digital map data © Crown copyright 2025. All rights reserved. Licence number AC0000808122. © Environment Agency copyright and/or database right 2025. All rights reserved. Contains OS data © Crown copyright and database right 2025.

Note: Surface Water Flood Risk Extent - Very Low is all other areas unshaded



This drawing has been prepared for the use of AECOM's client. It may not be used, modified, reproduced or relied upon by third parties, except as agreed by AECOM or as required by law. AECOM accepts no responsibility, and denies any liability whatsoever, to any party that uses or relies on this drawing without AECOM's express written consent. Do not scale this document. All measurements must be obtained from the stated dimensions.

Project Title			
Meridian Solar Farm			
Map Title			
Environmental Statement Figure 11-4: Surface Water Flood Risk Sheet 4 of 7			
Scale	Version	Drawn	Reviewed
1:20,000	0	LL	AK

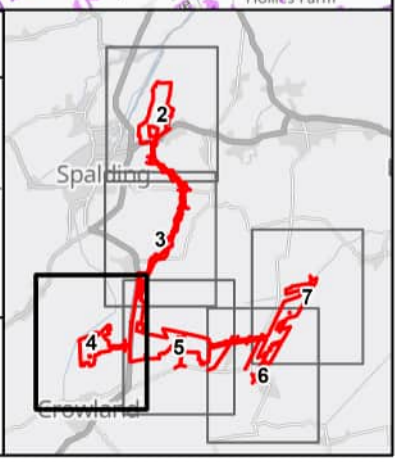
Legend

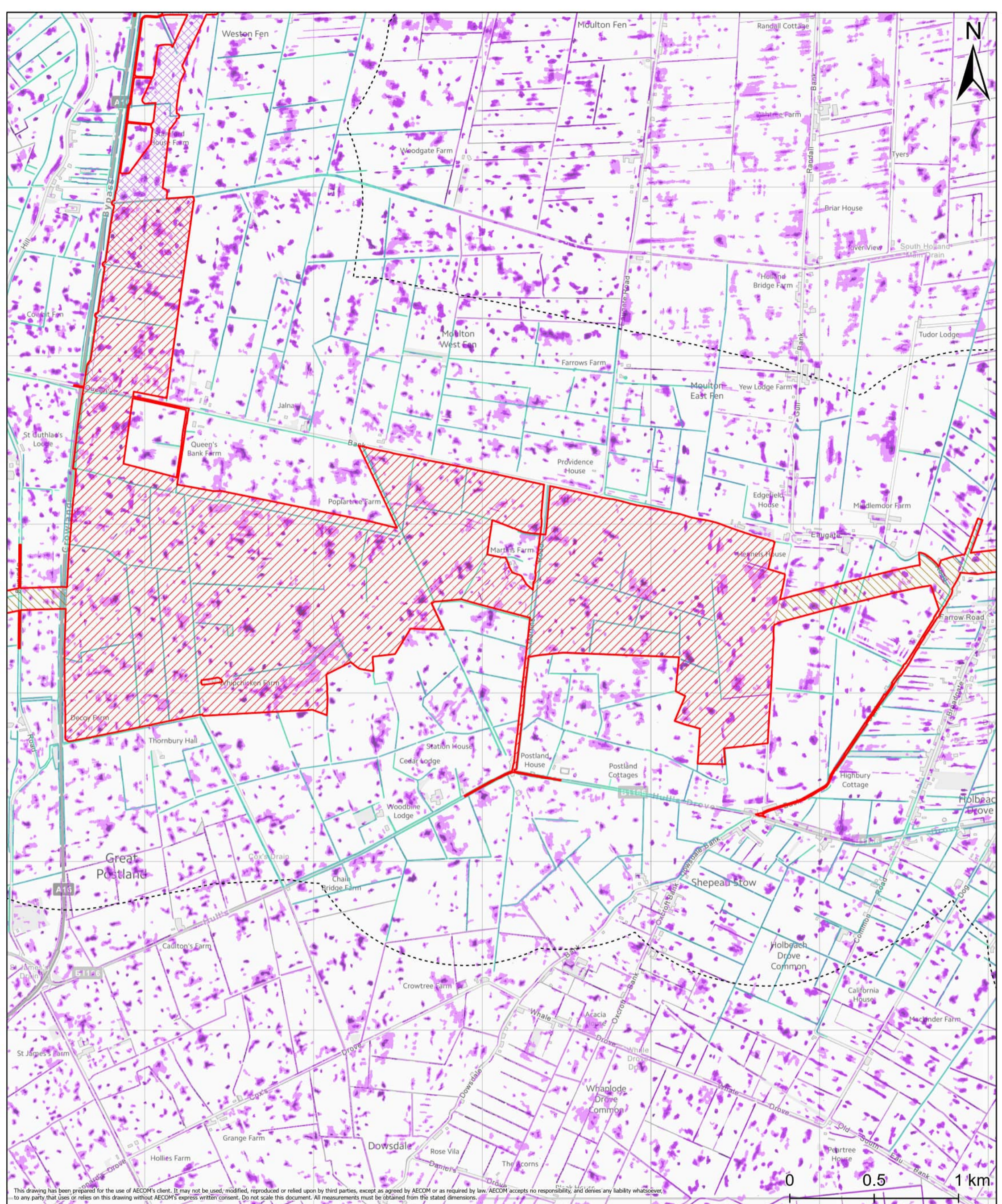
- Order Limits
- Order Limits - 1km Buffer
- Grid Connection Route
- Inter-Array Connections
- Solar Development Areas
- Designated Main River
- Ordinary Watercourse
- Surface Water Flood Risk Extent**
- High - 3.3% Annual Exceedance Probability
- Medium - 1% Annual Exceedance Probability
- Low - 0.1% Annual Exceedance Probability

Date: 20/03/2026

Copyright
 Contains OS data © Crown Copyright and database right 2025. Contains data from OS Zoomstack, Contains OS data © Crown copyright 2025. Reproduced from Ordnance Survey digital map data © Crown copyright 2025. All rights reserved. Licence number AC0000808122. © Environment Agency copyright and/or database right 2025. All rights reserved. Contains OS data © Crown copyright and database right 2025.

Note: Surface Water Flood Risk Extent - Very Low is all other areas unshaded



This drawing has been prepared for the use of AECOM's client. It may not be used, modified, reproduced or relied upon by third parties, except as agreed by AECOM or as required by law. AECOM accepts no responsibility, and denies any liability whatsoever, to any party that uses or relies on this drawing without AECOM's express written consent. All measurements must be obtained from the stated dimensions.

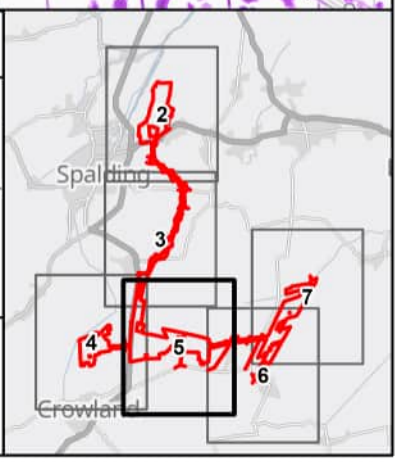
Project Title Meridian Solar Farm			
Map Title Environmental Statement Figure 11-4: Surface Water Flood Risk Sheet 5 of 7			
Scale 1:20,000	Version 0	Drawn LL	Reviewed AK

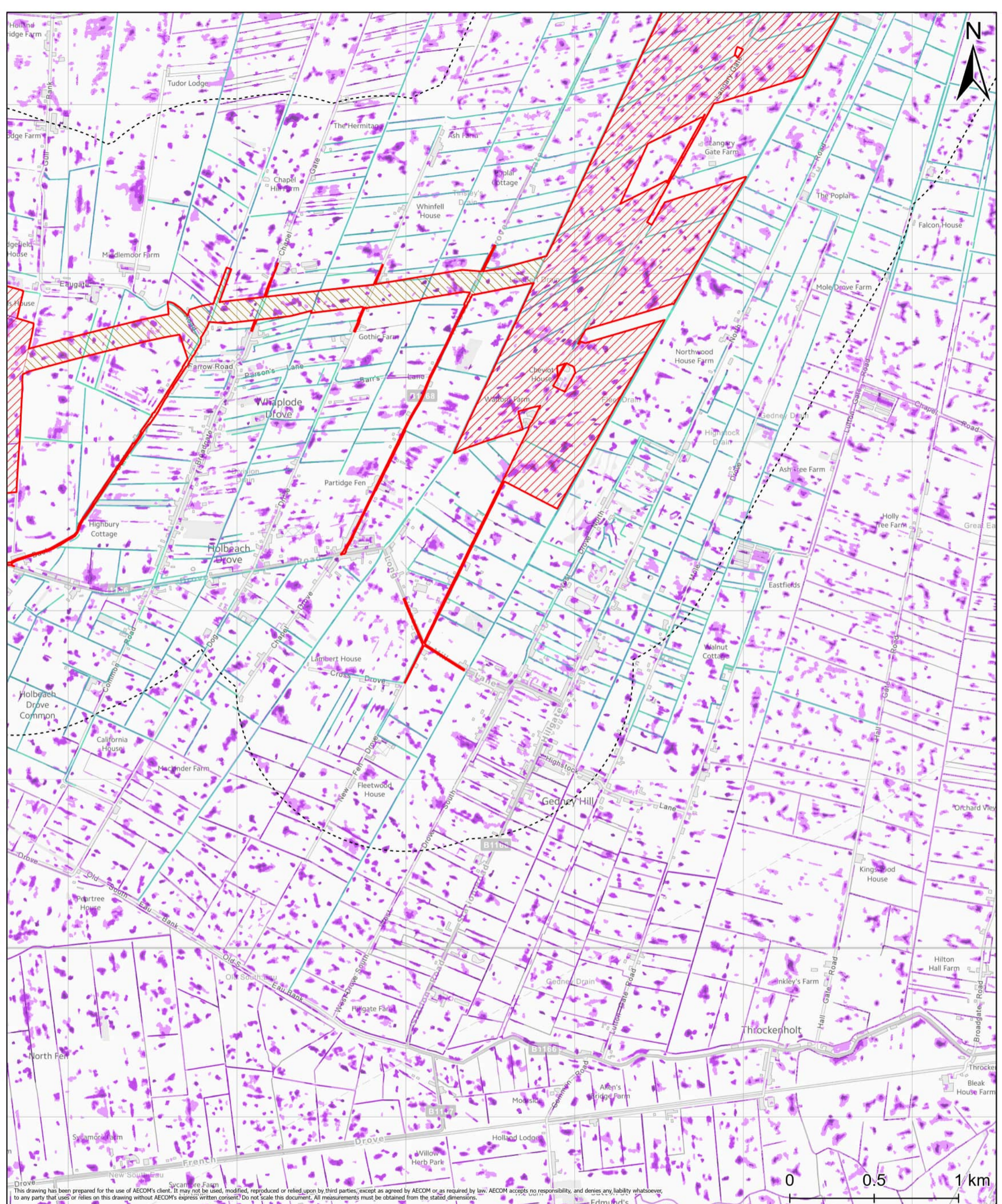
Order Limits	Ordinary Watercourse
Order Limits - 1km Buffer	Surface Water Flood Risk Extent
Grid Connection Route	High - 3.3% Annual Exceedance Probability
Inter-Array Connections	Medium - 1% Annual Exceedance Probability
Solar Development Areas	Low - 0.1% Annual Exceedance Probability

Date: 20/03/2026

Copyright
Contains OS data © Crown Copyright and database right 2025. Contains data from OS Zoomstack, Contains OS data © Crown copyright 2025. Reproduced from Ordnance Survey digital map data © Crown copyright 2025. All rights reserved. Licence number AC0000808122. © Environment Agency copyright and/or database right 2025. All rights reserved. Contains OS data © Crown copyright and database right 2025.

Note: Surface Water Flood Risk Extent - Very Low is all other areas unshaded





This drawing has been prepared for the use of AECOM's client. It may not be used, modified, reproduced or relied upon by third parties, except as agreed by AECOM or as required by law. AECOM accepts no responsibility, and denies any liability whatsoever, to any party that uses or relies on this drawing without AECOM's express written consent. Do not scale this document. All measurements must be obtained from the stated dimensions.

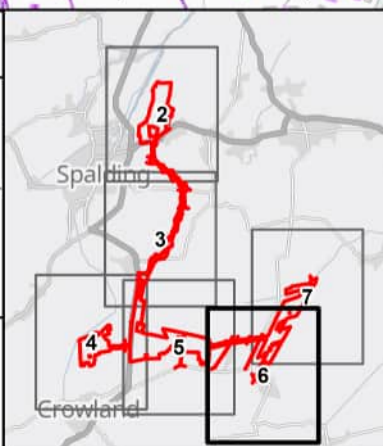
Project Title Meridian Solar Farm			
Map Title Environmental Statement Figure 11-4: Surface Water Flood Risk Sheet 6 of 7			
Scale 1:20,000	Version 0	Drawn LL	Reviewed AK

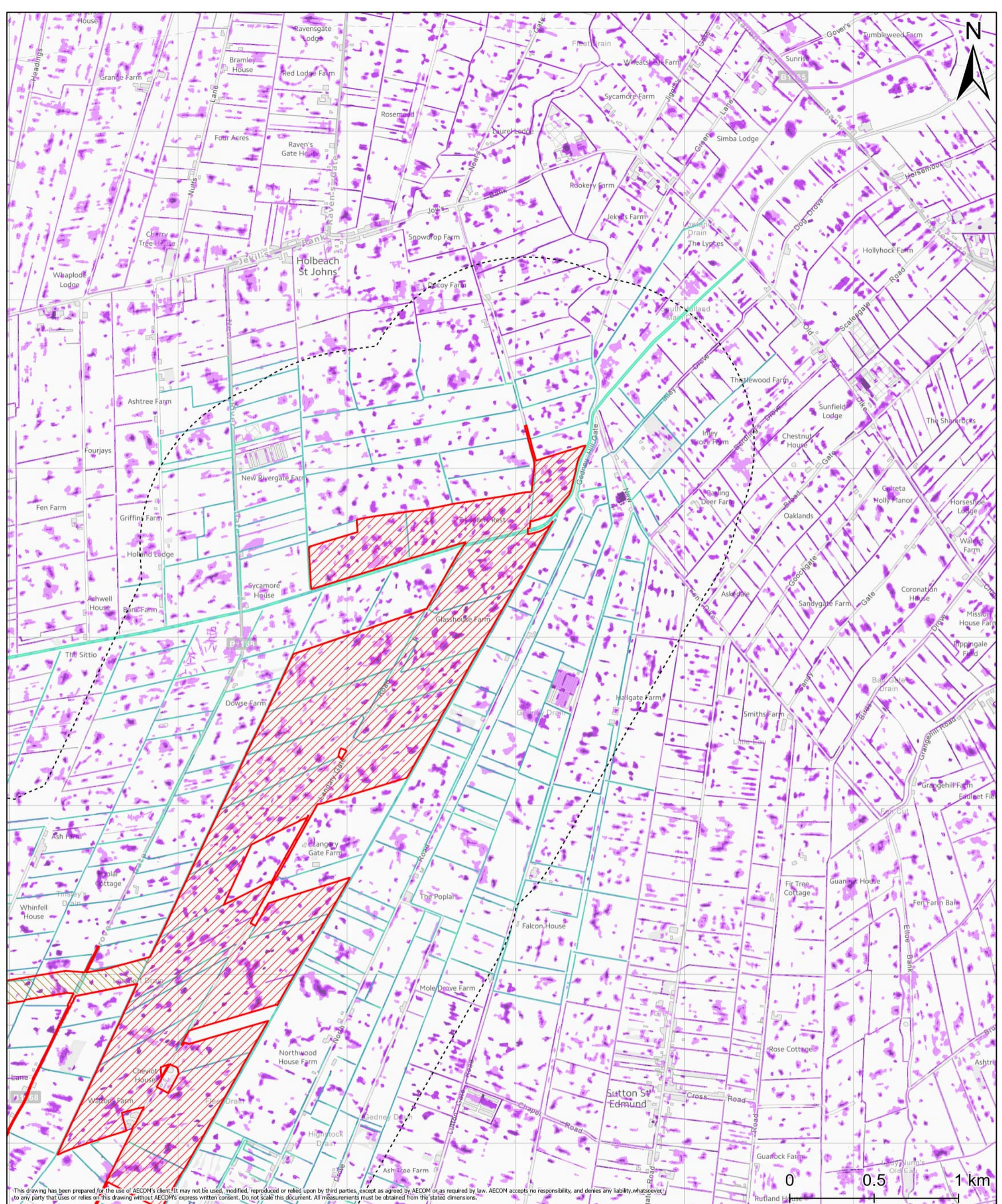
Order Limits
Order Limits - 1km Buffer
Inter-Array Connections
Solar Development Areas
Ordinary Watercourse
Surface Water Flood Risk Extent
High - 3.3% Annual Exceedance Probability
Medium - 1% Annual Exceedance Probability
Low - 0.1% Annual Exceedance Probability

Date: 20/03/2026

Copyright
 Contains OS data © Crown Copyright and database right 2025. Contains data from OS Zoomstack, Contains OS data © Crown copyright 2025. Reproduced from Ordnance Survey digital map data © Crown copyright 2025. All rights reserved. Licence number AC0000808122.
 © Environment Agency copyright and/or database right 2025. All rights reserved. Contains OS data © Crown copyright and database right 2025.

Note: Surface Water Flood Risk Extent - Very Low is all other areas unshaded





This drawing has been prepared for the use of AECOM's client. It may not be used, modified, reproduced or relied upon by third parties, except as agreed by AECOM or as required by law. AECOM accepts no responsibility, and denies any liability, whatsoever, to any party that uses or relies on this drawing without AECOM's express written consent. Do not scale this document. All measurements must be obtained from the stated dimensions.



Project Title Meridian Solar Farm			
Map Title Environmental Statement Figure 11-4: Surface Water Flood Risk Sheet 7 of 7			
Scale 1:20,000	Version 0	Drawn LL	Reviewed AK

Legend
Order Limits
Order Limits - 1km Buffer
Inter-Array Connections
Solar Development Areas
Ordinary Watercourse
Surface Water Flood Risk Extent
High - 3.3% Annual Exceedance Probability
Medium - 1% Annual Exceedance Probability
Low - 0.1% Annual Exceedance Probability

Date: 20/03/2026

Copyright
Contains OS data © Crown Copyright and database right 2025. Contains data from OS Zoomstack, Contains OS data © Crown copyright 2025. Reproduced from Ordnance Survey digital map data © Crown copyright 2025. All rights reserved. Licence number AC0000808122. © Environment Agency copyright and/or database right 2025. All rights reserved. Contains OS data © Crown copyright and database right 2025.

Note: Surface Water Flood Risk Extent - Very Low is all other areas unshaded

